

# FOLK SONG AND DANCE SOCIETY OF VICTORIA

## ABOUT THE SOCIETY

- Its MAILING ADDRESS is P.O. Box 1096, Carlton, Victoria, 3053.
- It is INCORPORATED under the Associations Inc. Act (1981).
- It has the REGISTERED TRADING NAME of "FOLK VICTORIA", which is used mainly for publicity and sponsorship purposes.
- It holds MONTHLY MEETINGS (usually the first Monday of the month), where your views and suggestions can be voiced.
- It PROVIDES SPONSORSHIP, where appropriate, for various folk events and projects throughout the state.
- It REPRESENTS VICTORIA in matters involving all forms of folk arts, and as such is a "Friend" of the Australian Folk Trust, Australia's national folk arts organisation.
- It charges MINIMAL ANNUAL MEMBERSHIP FEES.

## MEMBERS' BENEFITS

1. PROVIDED FREE OF CHARGE: -
  - Monthly magazine-style NEWSLETTER - "FOLK VINE" - containing information about folk events, news and views from Victoria, Interstate and Overseas, record and book reviews, songs, tunes, stories, poems, dances, radio and TV listings - and anything else that comes in!
2. DISCOUNTED ("MEMBERS") ENTRY FEES TO: -
  - The Society's weekly Folk Club (The MELBOURNE FOLK CLUB).
  - All other clubs, concerts, dances, workshops and other functions run or sponsored by the Society.
  - Events run by other Victorian folk groups, such as the:
    - Colonial Dancers
    - Echuca Folk Club
    - Folklore Council
    - Geelong Folk Club
    - "Peninsula" Folk Club
    - T.S.D.A.V.
    - "U.T. Creek" Folk Club
    - Victorian Folk Music Club
  - Events run by a variety of interstate folk clubs.
3. DISCOUNTED ("MEMBERS") CHARGES PAYABLE FOR: -
  - Records, cassettes and books sold at F.S.D.S.V. events.
  - Advertising of appropriate items in "FOLK VINE".

\*\*\*\*\* "PLEASE RUSH ME MY F.S.D.S.V. MEMBERSHIP CARD" \*\*\*\*\*

NAME:.....

ADDRESS:.....

.....Postcode.....

PHONE.....(H).....(W).....

Please find enclosed A \$ Cheque as payment for: -

SUBSCRIPTIONS FOR JULY 1992 to JUNE 1993

SINGLE - \$36 (CONCESSION - \$25)

FAMILY - \$54 (CONCESSION - \$36)

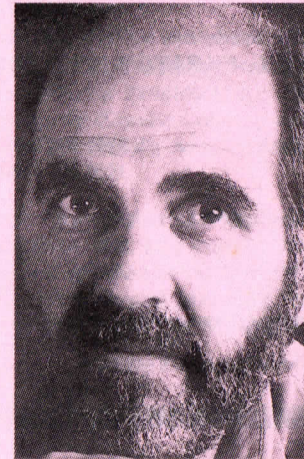
(N.B. "Concession" rates apply to PENSIONERS, FULL TIME STUDENTS, and people living in the COUNTRY - denoted by being outside the (03) phone area.

\*\*\*\*\* Return this form to P.O. Box 1096, Carlton, Vic., 3053 \*\*\*\*\*



# FOLK VINE

The Newsletter of the  
Folk Song & Dance Society of Victoria



**ROY BAILEY**  
September 27



**VIN GARBUTT**  
October 4

East Brunswick Club Hotel

ISSN: 0811- 0107

REGISTERED BY AUSTRALIA POST

PUBLICATION NO. VBH 3680

**SEPTEMBER 1992**

**Volume 17**

**No.8**



FOLKVINE is the monthly Newsletter of the Folk Song and Dance Society of Victoria. Except where it is indicated that copyright is reserved, all articles in Folkvine may be freely reprinted, provided source and author are clearly acknowledged. Views expressed herein are those of the contributors and do not necessarily reflect those of the Society or the Editor.

**F.S.D.S.V. COMMITTEE 1991-1992**

GENERAL ENQUIRIES TO:- DEREK BROWN (President) (03) 497 3321 (H)  
 Dave Brannigan (Vice President) (03) 762 2435 (H)  
 Annie McGlade (Secretary) (03) 489 1014 (H)  
 Coralie Collins (Treasurer) (03) 480 1020 (H)  
 Meg MacDonald (Folk Club Organiser) (03) 387 5256 (H)  
 Hugh MacEwan (Gen. Committee) (03) 489 2441 (H)  
 Jamie Johnston (Gen. Committee) (03) 568 7958 (H)  
 Richard Trevorrow (Gen. Committee) (03) 417 6768 (H)

CO-OPTED PEOPLE, RESPONSIBLE FOR:-

MAILING : Pam Connell (03) 481 7349 (H)  
 MEMBERSHIP SEC.: Peter Goodyear (03) 480 3087 (H)  
 LEGAL ADVICE : John Dick  
 NEWSLETTER ED: Jeanette Gillespie (03) 481 6051 (H)

**POSTAL ADDRESS: P.O. BOX 1096, CARLTON, VIC. 3053**

Victoria's AFT (Australian Folk Trust) Representatives are:

(General Committee) Hugh MacEwan (03) 489 2441 (H)  
 Mary Traynor (03) 387 2506 (H)

The FSDSV is now a member body of "THE VICTORIAN FOLK LIFE ASSOCIATION".

Executive officer of the VFA is Gwenda Davey (03) 509 5853 (H)  
 (03) 417 4684 (VFA)

\*\*\*\*\* **DEADLINES** \*\*\*\*\*

15th of each month for the following month's edition.

As long as items are ON TIME, TYPEWRITTEN IF POSSIBLE an attempt will be made to include them. Please send directly to:

The Editor, FOLKVINE, PO Box 1096, Carlton Vic 3053

HANDBILLS FOR INSERTION: 300 copies required by 4 pm. on the last Friday of the month. No A4 size inserts please.

ADVERTISEMENTS: Please supply as bromides or CLEAR black white copies. Please supply originals in double final size, as pages are reduced from A4 to A5 in printing.

**ADVERTISING RATES**

NON-MEMBERS	MEMBERS
\$40 Full Page	
\$20 Half Page	25% DISCOUNT
\$10 Quarter Page	(\$7 MINIMUM)
\$7 Eighth Page	
\$25 Inserts (A5 size)	

Postal regulations restrict the number of inserts we can include each month: first four only accepted, so BE QUICK!!

FOLKVINE is printed by SNAP printers.

**FROM THE EDITOR'S DESK**

Hullo Folks.



Welcome to new readers and FSDSV members. This is another one of those months when you could be out almost every night of the week listening to or playing folk/acoustic music of some kind, with overseas artists touring, the Melbourne International and Fringe Festivals happening, as well as our own usual local activities! Check the 'Folk in Victoria', 'Diary Dates' and 'Festivals' pages, ads and fliers to arrange your calendar for September.

Those readers who are FSDSV members will have some food for thought, as we present the annual reports from our President (Derek Brown), our Treasurer (Coralie Collins), and from the Victorian Folklife Association (Hugh MacEwan).

Read them carefully, consider all that the FSDSV does and has done, and ponder the thought that your presence at the rescheduled Annual General Meeting on Sunday, September 6th will give impetus to

the future direction and activities of the Society, whereas your absence could well mean that the FSDSV could cease to exist in its present form. You may find it desirable that the Victorian Folklife Association take over some of the Society's role, that the Society concentrate more on promoting concerts and other performances - whatever your opinion, come and voice it on the 6th!

Welcome back to Andy Rigby and Tony Falla who have been making us all envious tripping overseas. Melanie Ball has sent a report from Broome, WA, but unfortunately space does not permit me to print it this time. Neither can I print Seagull Graham's article about the Comhaltas' tune competition which was held on August 13th. Watch out for these next issue. Keep on sending in the articles, comments and information - it's your magazine. Enjoy September.

Happy reading

Jeanette



(Thanks to Seagull Graham, typing, and David Alderson, computer assistance and printing, and all contributors.)



**Folk Song & Dance Society of Victoria  
 Annual General Meeting**

**Rescheduled to Sunday September 9th**

(August 9th was inadequately attended!)

2.00 pm till 4.00 pm

Office of the Victorian Folklife Association

144 George Street, Fitzroy

Members and all others interested in the folk arts in Victoria are welcome to attend



# FOLK IN VICTORIA



No shortage of good things to see and hear since I last wrote.

Folk lovers from various places, including Melbourne, Marysville, Albury/Wodonga and Castlemaine, gathered at **Duncan Brown's Guildford** property on July 25 and 26 and also at the **Mountain View Pub in Wandiligong** on August 8 and 9 to sing, play and enjoy the country air, the sunshine and each other's company. These sorts of informal gatherings are the 'heart and soul' of folk music. May there be many more of them!

On the performance front, it was a case of 'spot the acres of familiar faces in the audience' at the **Ralph McTell** and **Sweet Honey in the Rock** concerts.

It is 25 years since **Ralph McTell** recorded his first album. Many people seem to know only his hit "Streets of London", but his talents as singer, songwriter and guitarist are so much broader. Themes he has tackled through the years include love, romance, friendship, history, emigration, addiction, unemployment, racism and social justice. He performed a huge range of his songs on **July 24th**, with characteristic warmth, humour, depth and perception, always maintaining an easy and friendly rapport with his audience. If you haven't heard much of Ralph McTell's material, get hold of the "Silver Celebration" CD, an impressive collection of some of his best songs. **Eric Bogle** and **Brent Miller** proved most compatible performing companions to McTell for this tour.

Local group **Tiddas** looked a little taken aback by the huge ovation they received as they opened for Sweet Honey in the Rock at the Concert Hall on **August 18**. It was well deserved. The three girls' reputation as singers and songwriters of sensitivity and power grows with each performance. Despite appearing a little tired - jet lagged perhaps - on stage, **Sweet Honey in the Rock** delivered a concert which built in its intensity until almost all in the capacity audience were on their feet, swaying, clapping dancing and smiling. The five women sang everything from blues to

gospel to African chants with changing rhythms, switching leads and leaping and dancing harmonies. Quite an experience.

**One-C-One** acoustic music venue continues to present quality concerts every Sunday night - three of those in August and September are part of the Melbourne Fringe Festival.

**The Boite World Music Cafe** has had some disruption lately with the renovation of the Mark Street Hall being foisted on them at short notice. However most people seem to have caught up with their temporary venues; the Singers Night on August 22 certainly had no shortage of audience or singers. See elsewhere in Folkvine for this month's activities.

**The Melbourne Fringe Festival** has a great music program this year. I've published some in the Diary Dates. For further details, phone the Fringe hotline on (03) 686 2142.

And here are four wonderful "don't miss" concerts coming up in September and October.

- **MARY BLACK** supported by **SHANE HOWARD**  
Friday September 11th, Dallas Brooks Hall.
- **ROY BAILEY** supported by local artists.   
Sunday September 27th, East Brunswick Club Hotel, 280 Lygon Street East Brunswick 8.00pm.
- **VIN GARBUTT** supported by local artists.  
Sunday October 4th, details as above.
- **DeDANNAN** and **ALAN STIVELL**, with **SIROCCO**   
Monday October 12th, Melbourne Concert Hall  
Tuesday October 13th, Geelong Performing Arts Centre.



## Melbourne Folk Club

Nick and Diane are the Folk Club's new hosts at the East Brunswick Club Hotel and they're keen to see the club continue there on Friday nights. Audiences have been down a bit during the winter months, though there've been many newcomers who have enjoyed the concerts and returned for more.

Singer/songwriter **PETER HICKS** from Sydney presented a strong, entertaining and thought provoking bracket on July 31st. His cassettes and song books are available from Coralie at the Club's record stall. Peter was supported by **Rob Freethy** from the Selby Folk Club.

**THE HIGH TIMES STRING BAND** performed with their usual energy and excellence on August 7th. Rick E Vengeance missed the night but is going to make up for it this month!

**DANNY SPOONER** and friends (**Pat Evans** and **Duncan Brown**) took us in story and song through the life and music of one of Australia's foremost songwriters, Don

Henderson, on August 13th. I'm always spellbound by Danny's presentations, no matter whom or what they are about! This one was no exception.

Women's singing group **NUDE RAIN** drew a large audience on August 21st. By the end of the bracket, the audience had been impressed, the sound mixer was in love, and the girls' following had grown yet again!

More reports next time. Let us know who you've enjoyed.

Make sure you pin up the **September Folk Club** flier in a prominent place! And if you can't make it yourself, tell your friends and spread around a few photocopies! All the nights are looking good. **The Peninsular Folk Club** is visiting on **September 18th** and I know Lorraine Sly has done a tremendous amount of work organising this visit - so I hope we can gather a full house.

See you around somewhere  
Jeanette.



The  
**GREEN LANTERN**  
Coffee Shop &  
Music House

\* 13 BURWOOD HWY, BURWOOD  
PH: 808-8025

TUES-WED-THURS-SUN-8.30-12.30 AM  
FRIDAY & SAT. -8.30-2.00AM

**MUSIC SWOP SHOP**  
Used Musical  
Instruments  
149 Elgin Street Carlton 3053  
Telephone (03) 348 1194

### ERIC PURDIE

#### CARPENTER & JOINER

(and long time folkie)

PHONE: 458-4969

TWENTY FIVE YEARS EXPERIENCE  
SPECIALISING IN  
RENOVATIONS, RESTORATIONS & HOUSE  
EXTENSIONS.

also  
CABINET MAKING AND  
GENERAL CARPENTRY.

H.G.F. Registered Builder.  
Obligation Free Quotes.  
References available.  
All Suburbs.



# A SELECTION OF DIARY DATES

Please check in the 'Music Venues' etc centre-fold for any **REGULAR** venues and events. This column will be only for those **not** mentioned there, or for **one-off** events, or those which mention specific **performers** (check **centre pages** for further details on these). Don't forget to also check the **Festivals** pages. Many of this month's events are associated with the **Fringe Festival** - it's a busy time in the old town!

**Melbourne Folk Club - Friday nights at the East Brunswick Club Hotel, 280 Lygon Street, Brunswick East. 8.30pm till 11.00pm, followed by music session till the wee small hours. \$6, \$5 conc, \$4 memb. Floor spots for performers from 8.30 till 9.00pm.**

- 4th Sept** Odds'n'Sods - early Flemish and Yiddish music. The Truth About Roses - Eildon Searle and Marion Barrow.
- 11th Sept** Russell Mountney; Five and a Zac - Ellen Hundley and group.
- 18th Sept** Peninsular Folk Club night - various performers.
- 25th Sept** Tony O'Rourke and Kathleen Cranage; Connor Hayes; Rick E Vengeance.
- 27th Sept** Concert - **Roy Balley** - a Sunday night special in conjunction with 'Across the Borders' at the East Brunswick Club Hotel.
- 4th Oct** Concert - **Vin Garbutt** - as above.

**The Bolte World Music Cafe - (FRC): Fitzroy Community Rooms, under pavilion behind Brunswick Street Oval, Nth Fitzroy, or (PHC): Presbyterian Church Hall, cnr Michael and McKean Streets, Nth Fitzroy. 8.15pm. \$10/\$6. Members concessions. Music and dance. Warm fires, drinks and snacks.**

- Fri 4th Sept (FRC)** Percussion Plus: "Bang It With a Fork" with Linsey Pollak and "Mazing Marimbas" with Andy Rigby.
- Sat 5th Sept (PHC)** Ceilidhe Night, with Comhaltas musicians and guests "Moving Harps".
- Fri 11th Sept (FRC)** Thula Sana plays South African Marabi music.
- Fri 18th Sept (FRC)** Greek Kafeneio, with Apodimi Compania.
- Fri 25th Sept (FRC)** Basically Balkan, with Stale Popov (young Macedonian group).
- Sat 26th Sept (FRC)** Singers' Night with Fay White and guests. Floor spots available.



**One-C-One in Concert - live music every Sunday night in Brunswick. 8pm - 11pm at the Brunswick Mechanics Institute, cnr Sydney and Glenlyon Rds, Brunswick. \$8 and \$5. Free tea and coffee; cakes for sale.**

- 6th Sept** Andrew Pendlebury, guitar virtuoso; Chris Faulk, song-writer, singer and guitarist; Le Tuan Hung and Minh Ha, Vietnamese music.
- 13th Sept** Tiddas, great voices, music, harmonies and songs; The Raving Beauties, acoustic 4-piece band; Pesa Moziki, African music.
- 20th Sept** to be advised.
- 27th Sept** to be advised.

## WEDNESDAY SEPTEMBER 2

- **Womens Performance Night** at Cafe Yartz, 224 High Street, Northcote. 8.00pm. Intended to provide a secure comfortable space for women learning to perform or extending their skills. Contact Penelope Swales (03) 318 4325. \$7 \$5 \$3.



## THURSDAY SEPTEMBER 3

- **Liz Van Dort** (Former 'Folkvine' editor) sings traditional songs from all over the world, exploring the immense possibilities of the human voice. Cafe Yartz, 224 High Street, Northcote. 8.00pm \$7, \$5, \$4. Also at same venue on 4th, 6th and 7th September.

## FRIDAY SEPTEMBER 4

- **Benefit for Amnesty International, with Jugularity.** Moreland Road Baptist Church Hall, 383 Moreland Road, Brunswick. Supper and drinks provided. No alcohol or smoking. \$10 adults, \$5 chn and conc, \$25 family. Contact: (03) 354 3659
- **Selby Folk Club.** Selby Community House. Guests: **Skips**, Balkan and Greek dance group. Floor performers also welcome. 8.30pm. \$4.
- **Apodimi Compania** play Greek music at Niko's Tavern, 190 Mt. Dandenong Rd, Ringwood East. 9.00pm. \$5, \$4, \$3.

## SATURDAY SEPTEMBER 5

- **Aba Baku** - music from East Africa and the Middle East - at Montsalvat, Hillcrest Avenue, Eltham. 6.00pm. \$10, \$8, \$5.
- **Maireid** - Six-piece band playing Celtic contemporary and traditional songs and music - at St. John's Southgate, 20 City Road, South Melbourne. 8.00pm.
- **Le Blanc Brothers' Cajun Aces** - infectious traditional music of Southern Louisiana. Napier Hotel, 210 Napier Street, Fitzroy. 9.30pm - midnight. Free. Also at the same venue on September 12th and 19th.
- **Andrew Pendlebury** - music for guitar - original works and pieces from the South American, Appalachian and Celtic traditions. Mietta's, Alfred Place, Melbourne. 8.00pm and 10.00pm. Contact: 654 2366.



## SUNDAY SEPTEMBER 6

- **FSDSV Annual General Meeting.** 144 George Street, Fitzroy. 2.00pm till 4.00pm. All welcome.
- **Singers Afternoon:** Informal singing session at 225 Rathmines Street, Fairfield. **Theme Day** (as there are so many 'Virgoans' on the folk scene): songs which mention months, years or seasons. Come at 1.00pm for soup and mulled wine, or 2.30pm to sing or listen. Bring copies if you have a song you wish to share. Bring instruments and something to eat or drink and party on! Enquiries: Jeanette Gillespie: (03) 481 6051.
- **Maireid** at Montsalvat, 5.00pm. \$15, \$12, \$7. Also at the Botanical Hotel, Domain Road, South Yarra on September 16th. \$7, \$5, \$4.
- **Ray Pereira's Bongo Fury** - Afro/Cuban Percussion and Vocal Chant - at Montsalvat following Maireid at 6.00pm. Also at Gershwin Room, Esplanade Hotel, St. Kilda, September 11th (free).
- **Apodimi Compania** at the Retreat Hotel, Sydney Road, Brunswick. 8.30pm. Free. Dance the night away every Sunday night at the Retreat.
- **Maryborough Family Music Workshops** for children and adults. For details contact Pauline Porra (054) 62 2200.

## TUESDAY SEPTEMBER 8

- **Tiddas** - flushed with success after a huge ovation at the Melbourne Concert Hall - playing at Mietta's at 8.00pm. \$8, \$7, \$5. Also at Cafe Yartz on September 15 & 16.

## WEDNESDAY SEPTEMBER 9

- **Aba Baku.** Botanical Hotel, Domain Road, South Yarra. 9.00pm. \$5, \$4, \$3.

## FRIDAY SEPTEMBER 11

- **Mary Black** and **Shane Howard** at the Dallas Brooks Hall. Bookings: Bass.



- **Bendigo Bush Dance and Music Club.** Spring Gully Hall, 8.00pm. Emu Creek Band.
- **The Raving Beauties, Chris Faulk, Kerry Gilmartin and Penelope Swales** at the Empress of India Hotel, Nicholson Street, North Fitzroy. 8.30pm. \$8, \$5, \$4.

#### SATURDAY SEPTEMBER 12

- **Penelope Swales** at Cafe Yartz, 9.00pm - midnight. \$6, \$4, \$3.



#### SUNDAY SEPTEMBER 13

- **Growing Up, Growing Old** - a concert presentation in song, music, story, poetry and narration exploring the joys and trials of the experience of growing. With Chris Larner, Anna Lopata, Jeanette Gillespie, Danny and Gael Spooner and Mary Traynor. 2.30pm. Anglers Hall, cnr Rathmines and Wingrove Streets, Fairfield. \$7, \$5 conc, includes refreshments.
- **Bunyips, Bunnies and Brumbles** at Kew - Mike Jackson with a show particularly suited to 3 - 8 year olds. 2.00 - 3.00pm. \$12 family, \$8 for Parents for Music member families. Tickets in advance please: Fiona 859 9398 or Jacinta 853 9050.

#### TUESDAY SEPTEMBER 15

- **Jeanette Gillespie and Jenny Simpson** at the Green Lantern Coffee Lounge, 13 Burwood Highway, Burwood. 9.00pm - midnight. \$2 cover charge; meals and snacks available.

#### FRIDAY SEPTEMBER 18

- **Thoroughly Postmodern Millie** at Cafe Yartz, 9.00pm - midnight. \$8, \$6, \$4. Also at the Yartz on Saturday 19th.

#### TUESDAY SEPTEMBER 22

- **Melbourne Underground Musicians Society's** night at the Green Lantern Coffee Lounge, 13 Burwood Highway, Burwood. 8.30 - 12.30.

#### SATURDAY 26 and SUNDAY 27

- **Traditional and Folkloric Greek Dancing** - 1.00pm - 3.00pm and 4.00pm - 6.00pm on both days. Richmond Primary Community School Hall. \$30 for the weekend, or \$20 concession or if you book before Sept 18. Teacher is to be Stephanos Antoniou. Contact Margarita Gwyneth Jones: 583 1173.

### *The Bride's Fancy*

*Ann Poore  
and  
Martin Hungerford,*

*Cordially invite you to a Costume Ball,  
The Bride's Fancy,  
in honour of their marriage.*

*To be held in the Northcote Town Hall,  
on the 17th of October, 1992 at 7.00 pm.*

*An attempt at medieval or renaissance costume would be  
appreciated, but is not essential. Please come and help us  
celebrate this occasion.*

*B.y.o. Musical instruments, drinks. We would appreciate it if  
you could bring a plate.*

## THE BOITE WORLD MUSIC CAFE

### *Two Special September Events*

**Saturday 5th September at 8.15pm**

**Comhaltas Ceilidhe**  
featuring  
**Moving Harps 1**  
and the **Comhaltas musicians**

Be delighted by the exquisite melodies and arrangements of Australia's leading harp trio, Moving Harps. Andrew Rigby (recently returned from a successful trip to a harp festival in Ireland), David Rackham and David Alleway draw on melodies from Celtic, Latin American and African traditions as well as their own compositions. Dance to traditional music from the ever-growing band of Comhaltas musicians.

**Presbyterian Hall**  
cnr McKean and Michael Sts, North  
Fitzroy. Mel ref 44 D1.

**Saturday 26th September at 8.15pm**

**Singers' Night**  
featuring  
**Margret Roadknight**

Margret's mix of jazz, folk, blues and contemporary songs and her dry humour guarantee entertainment that is 'politically correct' and great fun! Try a song or two yourself during the 'floor spot' segment. You will have a most supportive audience.

**Fitzroy Community Room, under the  
pavilion behind Brunswick Street oval,  
North Fitzroy. Tram Stop 25.**  
Mel ref 44 B1.



*Entry \$10; \$6; members concessions. Delicious refreshments available for purchase.  
Enquiries: 417 3550*

## Growing Up, Growing Old

A concert presentation in song, story, poetry and narration which explores both the trials and the joys of moving through the stages of our existence from birth to death.

Devised by Chris Larner.

Featuring **Chris Larner, Anna Lopata,  
Jeanette Gillespie, Danny and Gael  
Spooner and Mary Traynor.**

**Sunday September 13th. 2.30pm.**  
**Anglers Hall, cnr Rathmines and  
Wingrove Streets, Fairfield.**

**\$7 and \$5 conc. includes refreshments.**  
Enquiries: Jeanette (03) 481 6051; Chris or  
Anna (03) 489 9714.

(You are welcome to continue the music,  
singing and conviviality at 225 Rathmines  
Street after the concert. BYO drinks etc.)

## Tamar Valley Folk Festival

**George Town Tasmania**  
**15 - 17 January 1993**

Guests include:  
Greek band from Melbourne 'Apodimi  
Compania' and Andy Saunders from  
Berri, NSW.

Enquiries to  
**G.T.F.C. 12 Esplanade South, George  
Town, Tas, 7253.**

Mick 003 821926  
Linda 003 822079



# FORTHCOMING FESTIVALS



September 19 - 20

**Aurora Clydesdale Stud Open Day and Folk Weekend - Wagga, NSW.**

Camp out on a lovely country property, eat stew and damper and play music around the fire, and take part in an open day to aid the 'Riding for the Disabled' organisation. No cost. Contact Dave Rackham for further information. Phone: (03) 529 2947.

September 25 - 28

**West Australian Folk Festival, Toodyay, WA.**

The best of WA's acoustic and folk artists, and selected interstate and international guests, with concerts, dances, workshops, sessions and street activities.

Enquiries: PO Box 198, North Perth, WA, 6006. Phone: (09) 370 1145.

**Bellingen Folk Festival, NSW.**

Enquiries: Carole Helman: (066) 558 587 or Brian: (066) 551 888



October 2 - 5

**SA State Folk Festival, Goolwa, SA.**

Enquiries: Keith Preston, Box 525, Adelaide, 5001. Phone: (08) 231 7247.

**Australian Bush Music Festival, Glen Innes, NSW.**

I have information sheets and application forms if anyone is interested at this stage. Otherwise direct enquiries to: (067) 321 359 or (067) 321 797

**Wagga Wagga Folk Festival, Uranquinty, NSW.**

Enquiries: PO Box S240, South Wagga, NSW, 2650. Phone: (069) 225 614.

**National Pipers' Convention, Wagga, NSW.**

For pipers, budding pipers, pipers' partners and fans of piping!  
Contact: Patrick Lyons (02) 569 0060.



October 23 - 25

**TSDAV Dance Weekend, Yackandandah, Vic.**

Enquiries: Maureen Beggs (03) 347 1518.

November 6 - 8

**5th National Folklife Conference, Melbourne, Vic.**

Enquiries: Hugh MacEwan: (03) 489 2441.

**Newcastle and Hunter Valley Folk Festival, Morpeth, NSW.**

Enquiries: (049) 265 297 or (049) 584033.



Christmas to New Year

**Nariel Creek Folk Festival, Victoria.**

Contact: Neville Simpson. (060) 771 241.



December 27 - January 1

**Gulgong Folk Festival, NSW.**

December 30 - January 3

**Maleny Folk Festival, QLD.**

Contact: Bill Hauritz, PO Box 840, Nambour, 4560. Phone: (074) 76 0600.



January 15 - 17

**Tamar Valley Folk Festival, George Town, Tasmania.**

Contact: Mick (003) 821 926 or Linda (003) 822 079.

January 21 - 24

**Turrumurra Folk Music Bush Camp, Victoria.**

Contact: Ernie and Cathy (03) 386 7108 or Diane Wisby (052) 331 265.



March 5 - 8

**Port Fairy Folk Festival, Victoria.**

Closing date for performers is August 31, 1992. PO Box 991, Geelong, 3220, Vic.

Phone: (052) 21 3106 Fax: (052) 25 1232

**Nariel Creek Folk Festival, Victoria**

Informal alternative to the crowds of Port Fairy

Contact: Neville Simpson (060) 771 241

March 12 - 14

**Jamberoo Valley Folk Festival NSW**

Note: Change of dates



# 2<sup>nd</sup> Wagga Wagga FOLK FESTIVAL



DANCES  
CAMPFIRES  
CONCERTS  
HOT SHOWERS  
WORKSHOPS

- : FEATURING :-
- \* Ratters + Tuins
  - \* Melaleuca
  - \* Wind 'n' Reed
  - \* Gary Shearston
  - \* Vince Brophy
  - \* Noel Rayner
  - \* Ross Smithard
  - \* Norm Ellis
  - \* Margaret Bradford
  - \* Sue Chalmers

OCTOBER 2, 3, 4, 5, 1992 at URANQUINTY

FURTHER INFORMATION - Jenny 069) 227493  
- Margie 069) 331158

# **27th National Folk Festival April 8 - 12 1993**

**Performers Applications  
Closing Date: September 25th.**

**Declan Affley Memorial Songwriting  
Award 1993  
Closing Date: October 31st.**

**Hurry! Time is running out! Be a part of next year's National Festival and keep a great tradition growing.**

**Folkvine has copies of the application forms for both of the above. If you would like a copy of either or both, please contact: The Editor, Folkvine, PO Box 1096, Carlton, Vic, 3053, or phone direct to Jeanette Gillespie on (03) 481 6051(ah), or contact the festival organisers at The Australian Folk Trust, PO Box 156, Civic Square, ACT, 2608**

## **FSDSV ANNUAL REPORTS 1991/92**

### **PRESIDENT'S REPORT**



This year has seen the Folk Song and Dance Society of Victoria continue its commitment to a co-ordinated folk arts programme for Victoria and to the presentation of a high quality folk music programme.

Nowhere has this commitment been more evident than at the Melbourne Folk Club. The reputation and popularity of the Club has continued to grow throughout the year, no doubt reflecting the diversity of the programming and calibre of the performances. Unfortunately Meg MacDonald can no longer continue in her roles as Club co-ordinator and committee member, due to family commitments, and I would like to express the Society's thanks and appreciation for her involvement over the past three years or so.

A major part of the Society's activity this year has been centred around the presentation of special events. Our involvement in the inaugural Celtic Music Festival afforded a wonderful opportunity to promote many of the artists who have supported us over the years. It was a very high profile event and the Society benefited greatly from the exposure, attracting a number of new members.

The March Concert Series of international artists was probably the most ambitious of the year's events; it was certainly the most time consuming. Four concerts in as many weeks, featuring such notables as Martyn Wyndham Reed, Peggy Seeger and Irene Scott, Rua and Andy Irvine, all of whom were ably supported by local performers.

Overall the series proved to be a great success both artistically and financially.

During the lead-up to the Concert Series, the Society found itself in a new role, that of tour promoter for the Rua Band. The task was to find other gigs for the Band during the period between Port Fairy and their concert so as to enable them to stay in Australia. This turned out to be a very worthwhile exercise in networking, not only from the point of view of Rua's financial wellbeing, but also with respect to the establishment of closer relations with a number of kindred organizations across the country.

A number of other special functions were undertaken throughout the year, including joint productions with Music Deli and the Brunswick Music Festival, family concerts and benefit performances.

This year has shown the Society certainly has both the expertise and the commitment to successfully undertake high quality artistic programmes. I believe this is the direction in which the F.S.D.S.V. should be concentrating its energies in the years to come; to ensure that opportunities abound for both members and performers to experience the best the world has to offer in the traditional music field, at affordable prices.

One very important aspect which has contributed significantly to the Society's success this year has been the venue. The "East" has proved to be an acceptable venue for our music and the recent decision to upgrade the P.A. system has ensured the continued availability of a high standard performance venue, accessible to all levels of performers.

Whilst on the subject of the "East", I would like to extend a very special note of thanks on behalf of the Society to our retiring hosts, Alan and Sue. Their generous support and assistance over the past two years has been a major contributor to the success of folk music at the "East". Alan and Sue have decided to take a break from the hustle and bustle of pub life to luxuriate in the tranquillity of home building. We wish them every success. While it is not without some sadness that we farewell Alan and Sue, we extend a warm welcome to our new hosts, Nick and Diane. Our new publicans have indicated their desire to continue support for the programmes of the Society and we look forward to developing a close working relationship in the promotion of the "East" as Melbourne's premier traditional music venue.

The Society has continued to pursue its objective of a co-ordinated folk arts programme for Victoria, and this year has seen two major activities come to fruition. As a direct consequence of the Heritage and Folklife Centre project, which the Society has been auspicing for three years with funds made available through the Victorian Ministry for the Arts, the Victorian Folklife Association has now been established. The Association will operate under its own auspices with interim support from the Victorian Ministry for the Arts and, in keeping with its role as an umbrella organization, represent Victoria at the A.F.T. as of the 1st. July 1992.

The position of "Folk Arts Administrator/Field Officer", which has been filled by Kathy Burgi for the past three years, has now been integrated within the charter of the V.F.A.. Much of the work initiated by Kathy, such as the 'Folklink' data base, will now be undertaken by the newly appointed executive officer of the V.F.A. Gwenda Davy. We extend our congratulations to

Gwenda on her appointment and convey our thanks and appreciation to Kathy for her commitment to the project over the years.

Despite the parlous nature of the world economy, the F.S.D.S.V. has managed to return a modest trading surplus for the year. I refer you to the Treasurer's Report for details. The sound financial position of the Society is due in no small part to the dedication and enthusiasm of our retiring Treasurer, Coralie Collins. Coralie has managed the financial affairs of the Society for the past three years and the functioning of the Committee has been greatly assisted by the high level of professionalism she has introduced into the Society's accounting practices. On behalf of the Committee I extend our thanks for the tremendous effort Coralie has put into this position.

In closing I would like to thank all the members of the Committee for their support and enthusiasm throughout the year. A very special thanks is also extended to all those volunteers and co-opted members who have given generously of their time and energy, to ensure that the various components of the Society function effectively.

The Folk Song and Dance Society of Victoria being a voluntary organization, relies totally on the goodwill of its membership. Please don't leave it to others. The Society needs your contribution.

Derek Brown  
PRESIDENT.



## FOLK SONG & DANCE SOCIETY OF VICTORIA

### TREASURER'S REPORT FINANCIAL YEAR 1991/92.

It is with pleasure that I present the audited accounts for The Folk Song & Dance Society of Victoria for 1991/92. This summary of the Annual Report, which has been prepared for 'Folkvine' includes the following relevant sections of 'Note 1: Accounting Policies'

*\* Non Current Assets:*

*The non current assets of the F.S.D.S.V. have been included in the balance sheet at their estimated replacement value.*

*\* Stock on Hand:*

*Stocks of records, tapes etc. have been included in the balance sheet at their cost price.*

The previously established F.S.D.S.V. accounts have been maintained. These consist of:-

\* A chequing/operating account, (minimal interest), through which the majority of the funds pass; utilised for the regular operations/business of the Society.

\* A 'cash management' / investment account, established to maximise the investment potential for the reserve funds of the Society. The monthly deposits, set aside for the maintenance and replacement of the Society's P.A. System are also retained in this account.

\* The National Festival account continues to be operated as a Term Deposit account, with the interest re-invested together with the principal, at the maturation of each term.

\* The Winter Workshop passbook account, which the Society is holding in trust.

The Grant accounts have been closed, as the F.S.D.S.V. has passed the role of administering the Victorian Ministry for the Arts grants to the Victorian Folklife Association.

The F.S.D.S.V. has accomplished another successful trading year; one where despite the economic situation, the total bank and term deposits of the Society show an increase of approximately \$1300.00. The various enterprises of the Society have paid their way and the Committee has been in a position to continue to finance its customary initiatives, for example:-

- i) Cost of advertising and promotion of National Festival benefit for Victorian performers.
- ii) Membership to 3CR, plus a donation to their 'Radiothon'.
- iii) A.F.T. Fare Equalisation Scheme.

The Macintosh Computer with the associated software, purchased by the Society last year is rarely idle. It is a regular contributor to 'Folkvine' and produced most of the promotional material for the March Concert Series. The graphics facilities are being increasingly utilised and the 'chook' now has a permanent home on the hard disk. Membership listings are now filed on the 'Mac.' and files are gradually being compiled for other information, reports and records of the Society.

The decision to upgrade the P.A. System this year was made with reference to the following financial information. The P.A. Maintenance a/c has accumulated funds of over \$1,900.00 this year, which with the balance accrued from previous years brought the total fund to almost \$3,400.00. The additional \$1200.00 has been advanced from the reserve funds of the Society. It is envisaged that funds accumulated over the coming year will offset this advance.

Once again the Melbourne Folk Club, thanks to Meg and her assistants, has completed another successful year. Despite rises in advertising and other associated costs we have avoided increases in Club entrance prices, which are cheaper than other comparable organisations. The policy of apportioning 10% of the door income for the P.A. Fund has been maintained. Performers continue to be paid to the extent afforded by the door money, with at times some assistance from the Management of the 'East', particularly with regard to contributions towards air fares for interstate artists. This year the profit from the Peggy Seeger Concert generated the additional income needed to maintain the Club in its present format, and to contribute towards the expenditure of the Society.



Although again a profit was made from the record/cassette sales project, the income has not matched that of other years, for several reasons. Paramount amongst these is the lack of availability of records; the average folk enthusiast's preference for vinyl, linked firmly to the fact that many 'folkies' do not yet own C.D. players; today's restricted budgets; the fact that much of the business transacted is the sale of our local artists material, on which there is no mark up for profit, and lastly my inability to devote sufficient time to the enterprise. As this is an area from which increased income can be derived, it is hoped that the combined input and resources of the incoming Committee will be of assistance in accomplishing this.

The most profitable initiative of the F.S.D.S.V. this year was the promotion of, and our involvement in Special Functions, notably the Celtic Festival and the March Concert Series. While they each entailed a huge amount of work, their immense success was not only of benefit to the Society in a financial respect, but more particularly in enhancing the profile of the Society through the positive exposure these events generated.

While membership numbers have remained constant, there has been a decrease in actual monetary income, and indicative of today's economic climate there has been an increase in the number of concession memberships. Over the past three years the F.S.D.S.V. has derived a healthy portion of its income from the bank interest earned as the result of careful investment of its funds. As the result of the recession, bank interest rates have fallen and Society income from this source has been halved.

Although there has been a re-apportioning of some of the areas of administrative expenditure of the Society over the past three years, the actual total expended has not differed markedly. Despite a drop in the printing costs for the Newsletter in the previous year the one large increase in Society expenses over the past financial year has been for the printing of 'Folkvine'. There has been no rise in the rate charged by the printing company and no substantial increase in the number of magazines printed, so this increase of more than \$1600.00 for printing costs is directly related to the actual number of pages printed each month. These costs have been offset to some extent by the increased income earned from advertising and from sales of the newsletter. 'Folkvine' has achieved a well earned, excellent reputation, both throughout Victoria and interstate, and there is increasing interest from various music shops and other outlets for copies of the magazine for sale.

Consideration must however, be given to the fact that the overall production costs of the Newsletter now exceed the total membership income, which means that F.S.D.S.V. administration and other expenses must be covered from income derived from other sources. These sources are not infinite, so in order to meet its commitments one of the solutions for the Society may be an inevitable increase in membership fees. It is therefore important for members to consider carefully whether they feel the Society can continue to afford a magazine of this calibre and to convey their opinions to the incoming Committee.

I have enjoyed my three year term of office as Treasurer of the F.S.D.S.V. In particular, I have derived great satisfaction from meeting the challenge of implementing an accounting system that is both straight forward and professional; and of giving financial leadership which has contributed to the present sound fiscal position of the Society. I would like to express my thanks to each of the three Committees I have worked with in this role, and from whom I have received the utmost assistance and support. The constitution of the Society does not allow persons to hold an executive position for more than three years, but I am looking forward to continuing on the Committee for another term and am more than willing to give whatever input I can to the incoming Treasurer.

CORALIE COLLINS.

*Coralie Collins*



**TREASURER**

FOLK SONG AND DANCE SOCIETY OF VICTORIA Inc.

BALANCE SHEET AS AT 30TH JUNE 1992

1991

<b>NON-CURRENT ASSETS</b> (Note 1)			
P.A. System	12,000.00		
Computer & Software	2,689.65		
FSDSV Banners	<u>350.00</u>	15,039.65	10,250.65
<b>CURRENT ASSETS</b>			
<b>CASH AT HAND</b>			
Folk Club Float	100.00		
Record Sales	<u>100.00</u>	200.00	200.00
<b>CASH AT BANK:</b>			
FSDSV Accounts	(Note 2) 20,221.07		
Winter Workshop Account	<u>641.62</u>	20,862.69	19,523.92
<b>STOCK ON HAND:</b> (Note 1)			
Records, tapes, etc.		561.00	1,031.00
<b>ACCOUNTS RECEIVABLE:</b>			
Newsletter Advertising		135.00	232.63
		21,758.69	20,987.55
<b>GRANT ACCOUNTS:</b>			
		<u>0.00</u>	12,249.64
<b>TOTAL ASSETS</b>			
		<b>36,798.34</b>	<b>43,487.84</b>
<b>LESS CURRENT LIABILITIES</b>			
Grant Monies	0.00		12,249.64
Advance M'ship Subscriptions	772.00		831.00
Winter Workshops	641.62		612.45
"AGE" Advertising (June)	402.90		206.80
Audit Fees	250.00		400.00
<b>TOTAL LIABILITIES</b>			
		<b>2,066.52</b>	<b>14,299.89</b>
<b>NET ASSETS</b>			
		<b>34,731.82</b>	<b>29,187.95</b>
<b>Represented By:-</b>			
<b>MEMBERS' FUNDS</b>			
Opening Balance		29,187.95	20,211.67
Add Net Trading Income - 1992		5,543.87	8,976.28
<b>BALANCE AS AT 30th. JUNE 1992</b>			
		<b>34,731.82</b>	<b>29,187.95</b>

FOLK SONG AND DANCE SOCIETY OF VICTORIA Inc.

INCOME & EXPENDITURE STATEMENT  
YEAR ENDED 30TH. JUNE 1992

1991

INCOME:

Membership subscriptions	4,178.00	5,098.00
Newsletter Sales/Ads.	1,416.12	1,007.50
Folk Club: Net Income (Note 4)	2,431.67	2,311.50
Special Functions	6,796.50	2,138.00
Sale of Stock	3,165.00	4,847.00
A.F.T. Refund	195.63	0.00
Sundries	241.00	665.20
Interest Received (Note 3)	1,482.20	3,388.98
Grant Admin. 1	524.53	922.15
Grant Admin. 2	332.02	0.00
<b>TOTAL</b>	<b>20,762.67</b>	<b>20,378.33</b>

EXPENDITURE:

General Administration	1,078.75	395.20
M'ship Secretary	0.00	205.73
FSDSV Publicity/Promotion	255.70	313.00
A.F.T	483.31	447.25
Audit Fees	250.00	400.00
Donations	300.00	750.00
Newsletter: Printing	3,960.13	2,331.22
Postage	789.24	804.23
Administration	222.90	288.80
Special Functions	5,277.10	1,665.22
Purchase of Stock	2,408.16	3,174.92
Sundries	133.38	562.75
Financial Institution Taxes	60.13	63.73
<b>TOTAL</b>	<b>15,218.80</b>	<b>11,402.05</b>

NET TRADING INCOME

**5,543.87**      **8,976.28**

Less Capital Purchases

- P.A. System	4,600.00	2,300.00
- Computer Software	189.00	2,500.65

Add(Deduct)

- Accruals Adjustments	554.73	(69.20)
------------------------	--------	---------

TOTAL

**4,234.27**      **4,869.85**

NET CASH SURPLUS

**1,309.60**      **4106.43**

FOLK SONG AND DANCE SOCIETY OF VICTORIA Inc.

Notes to and forming part of the accounts for the year ended 30th. June 1992

NOTE 2: CASH AT BANK

1992

1991

OPERATING ACCOUNT

Opening Balance as at 1st. July 1991	669.02	929.48
Add Receipts	22,019.46	20,096.20
Transfer from Investment A/c	4,600.00	4,055.00
Less Payments	24,928.08	21,411.66
Transfer to Investment A/c	2,000.00	3,000.00
<b>Balance as at 30th. June 1992</b>	<b>360.40</b>	<b>669.02</b>
Represented by:-		
Bank Balance	766.63	856.39
Less Unpresented Cheques	406.23	187.37
	360.40	669.02

NATIONAL FESTIVAL ACCOUNT & TERM DEPOSIT

Opening Balance 1st. July 1991	4,508.92	4,007.87
Add Receipts	350.39	505.72
Less Payments	0.24	3.77
<b>Balance as at 30th. June 1992</b>	<b>4,859.07</b>	<b>4,509.82</b>

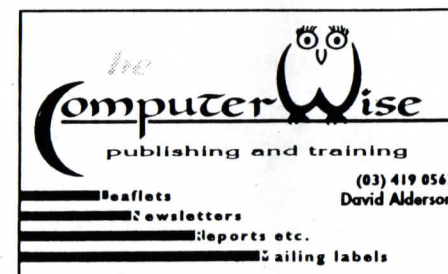
INVESTMENT ACCOUNT

Opening Balance 1st. July 1991	13,732.63	9,867.69
Add Receipts	5,873.69	7,924.88
Less Payments	4,604.72	4,059.94
<b>Balance as at 30th. June 1992</b>	<b>15,001.60</b>	<b>13,732.63</b>

TOTAL BANK & TERM DEPOSITS AS AT 30TH. JUNE 1992

**20,221.07**

**18,911.47**



## FOLK SONG AND DANCE SOCIETY OF VICTORIA Inc.

Notes to and forming part of the accounts for the year ended 30th. June 1992

NOTE 3: INTEREST RECEIVED	1992	1991
Operating Account	43.68	36.40
National Festival Account & Term Deposits	350.39	505.72
Investment Account	854.63	932.00
Grants Accounts	233.50	1,914.86
<b>Total</b>	<b>1,482.20</b>	<b>3,388.98</b>

### NOTE 4: FOLK CLUB

<b>INCOME</b>		
Door	14,538.31	14,740.59
Donations	1,111.01	1,900.00
	<b>15,649.32</b>	<b>16,640.59</b>
<b>LESS EXPENSES</b>		
Performers Fees	9,898.00	10,591.00
Promotion	2,899.05	3,076.73
Administration	5.50	57.47
Sundries	415.10	603.89
	<b>13,217.65</b>	<b>14,329.09</b>
<b>NET INCOME</b>	<b>2,431.67</b>	<b>2,311.50</b>

Note 1: An amount of \$1,483.71 has been apportioned from the Folk Club income for the maintenance of the P.A.system.

Note 2: An amount of \$445.30 has been apportioned from Special Functions income for the maintenance of the P.A.system.



## The Victorian Folklife Association and The Australian Folk Trust.

### Hugh MacEwan

Over the past three years the Folk Song and Dance Society of Victoria has played a leading role in the development of folklife programmes both at State and National levels.

The Society has campaigned long and hard for the establishment of a Heritage and Folklife Centre for Victoria and it is largely due to these efforts that the Victorian Folklife Association was established.

The Association has now taken up the challenges of promoting folk arts and to date, although progress has been slow, several major achievements have been accomplished.

Gwenda Davey has been appointed as the Association's Executive Officer (part time). This was made possible by monies granted from the Victorian Government through the Victorian Ministry for the Arts. Gwenda's input has been outstanding and the benefits to the Association from not having to rely totally on volunteers is rapidly becoming apparent.

The Association is at present setting up office at 144 George Street, Fitzroy and is hoping to be fully operational by mid-August. The office space is being shared by other arts groups such as the Community Arts Network and Multicultural Arts Victoria. This gives the Association a real opportunity to develop co-ordinated folklife programmes which have long been the goal of the Folk Song and Dance Society of Victoria.

The Association will continue to work closely with the Folk Song and Dance Society and other organisations, such as the Boite, to ensure that folklife activities are given the recognition they so richly deserve.

On the Australian Folk Trust front, things are moving ahead slowly but surely. One major initiative taken by the Trust in the past few months has been to take responsibility for all facets of National Folk Festival organisation. The 1993 National Festival will be held in Canberra and discussions are ongoing with the ACT Government's Arts Department in relation to festival funding.

The Australian Folk Trust continues to lobby for greater recognition of folk arts by the National Government and, although it is an uphill battle, the Trust is confident of making important gains over the coming months.

In November of this year the Victorian Folklife Association and the Australian Folk Trust, in co-operation with a number of other organisations, are promoting the National Folklife Conference and all involved are looking forward to a weekend of activities, forums and informal discussions which will undoubtedly raise the profile of folklife activities throughout Victoria and Australia.

The coming year brings new challenges, but I am confident that the Association, its constituents, and folk arts in general will continue to flourish.

Hugh MacEwan

President, Victorian Folklife Association  
Victorian Trustee, Australian Folk Trust.



# Folk On Radio



## IN MELBOURNE

### RADIO NATIONAL: AM 621

**SATURDAY:** 1:30pm - 2:00pm Talking History.  
**MON. - FRI:** 11.10pm - 1.00am Nightly Planet.  
 Robyn Johnston often plays local and international folk music.

### 3LO: AM 774

**SUNDAY:** 5.30am - 10.00am Australia All Over.  
 Folk Country and Chat with Ian "Macca" MacNamara.

### 3CR: AM 855

**MONDAY:** 10.30pm - Midnight Traditionally Late.  
 Co-ordinated by Peter Goodyear with various presenters.  
**TUESDAY:** 10.30pm - Midnight Local and Live. Marion Cincotta presents local recordings, with local acts live-to-air most weeks.  
**FRIDAY:** 10.30pm - Midnight The Boite World Music Show.  
 Alternating Fridays.

### 3EA: AM 1224

**SATURDAY:** 11.05pm - Midnight Irish Gaelic (1st. Sat.)  
 Scots Gaelic (3rd. Sat.)



### 3SCB FM ... 88.3

**THURSDAY:** 8.00pm - 10.00pm Fiddlestix. Fine folk music.

### 3ZZZ FM...92.3

**TUESDAY:** 12.00 - 1.00pm The Boite - World Music.  
**SATURDAY:** 11.00am - Noon Irish Programme.  
**SUNDAY:** 6.00pm - 7.00pm Irish Programme.

### 3RRR FM...102.7

**TUESDAY:** 2.00pm - 4.00pm Folk Show. Rick E Vengeance

### ABC FM...105.9

**MONDAY:** 11.30am - 12.30pm Music Deli. Repeat of first part of previous Friday's program.  
**FRIDAY:** 11.30am - 12.30pm The Songs and Stories of Australia. David Mullhallen.  
**FRIDAY:** 8.00pm - 9.30pm Music Deli. Steve Snelleman & Paul Petran  
**WEEKDAYS:** 5.10pm - 7.00pm Sue Howard often plays local and international folk and acoustic music.

### 3PBS FM...106.7

**WEDNESDAY:** 1.30pm - 3.30pm Multicultural Music - The Boite.  
**THURSDAY:** 8.30pm - 10.00pm Continental Drift - World Music.  
**SUNDAY:** 4.00pm - 6.00pm Global Village.  
 Acoustic, traditional and contemporary music from around the world.  
 9.00pm - 10.30pm World Music.



## REGIONAL

### 3RPP FM...94.3 (Peninsular area)

**SATURDAY:** 11.00am - 1.00pm Folk Show. Various presenters



- 3BBB FM...97.5 (Ballarat area)  
**TUESDAY:** 9.00am - 10.00am Ballads and Blarney. John Rugg
- 3YYR FM...100.3 (Geelong area)  
**MONDAY:** 10.00pm - Midnight (Alt. Wks) Meanderings. Bruce Potgeiter.  
**SUNDAY:** 7.00pm - 9.00pm Folks Alive. Various presenters.
- 3GCR FM...103.5 (Gippsland)  
**THURSDAY:** 8.00pm - 10.00pm What the Folk.  
 Lyndal Chambers/Geoff Harris/Hans Strating.
- 3CC FM...103.9 (Central Victoria)  
**MONDAY:** 8.00pm - 9.00pm Open Door - Roddy Winlaton.  
 9.00pm - 10.30pm Singers, Songwriters and Troubadours.  
 Andrew Pattison/Jim O'Leary.  
 10.30pm - Midnight The Organic Swagman.  
 Kerry McDonald.
- 3RPC FM...106.3 (Portland area)  
**WEDNESDAY:** 9.00pm - 11.00pm Forty Shades of Green./Folk and Beyond. - Jeanette Brennan/Tony Hudson. (Alt Wks.)
- 3ONE FM...106.9 (Shepparton area)  
**THURSDAY:** 7.00pm - 8.00pm Irish Programme - Mary Moore.



## The Songs and Stories of Australia September 1992

### Travelling Songs and Other Stories

**Friday 4th at 11.30am**

Banjo Paterson's "The Bushman's Song" is one of a number of songs which ably describe the life of the itinerant worker some 100 years ago. In this program we look at life on "The Wallaby Track", the people met and those left behind. The stories are told by Dobe Newton and the songs are performed by Dobe Newton with Dan Bourke, Steve Groves and Louis McManus.

### Sweet and Simple Pleasures

**Friday 11th at 11.30am**

A look at the early years of Australian social life and entertainment in the city and the bush including the popularity of horse racing and dancing as well as the music halls. The stories are told by Dobe Newton, Jan Wositsky and John Dengate with songs performed by The Larrikins and The Bushwackers.

### A Swag of Yarns

**Friday 18th at 11.30am**

Great bush ballads and other recitations for your enjoyment from some of our finest story tellers and reciters.

### Dreamtime Legends and Other Stories

**Friday 25th at 11.30am**

Bob Maza, Rhoda Roberts, Shirley Ibanez, Bob Corbett and Mick Summers are some of the storytellers who delve into the fascinating stories from our Aboriginal heritage. They are joined by Gamilaroi, Archie Roach and Kev Carmody amongst others who provide the songs and music

David Mulhallen, producer and presenter (08) 343 4000 ABC-FM Stereo



## MUSIC VENUES - METROPOLITAN

### MELBOURNE FOLK CLUB

Fridays, 8.30 - 11, followed by session East Brunswick Club Hotel 280 Lygon St. E. Brunswick. Contact Meg MacDonald, (03) 387 5256

Fri

### CAFE YARTZ

Acoustic-Eccentric Cafe Music Wed to Sun, cheap snacks Open Stage Sun. 224 High Street, Northcote Contact 481 8084

Wed  
to  
Sun

### CLIFTON HILL HOTEL

Fridays & Saturdays, late 10.30 - 2.30  
Queens Pde, Clifton Hill - phone (03) 489 8705

Fri  
Sat

### FOLKLORE COUNCIL OF AUSTRALIA

3rd Sat. each. month from 8 p.m. Eastern suburbs (venue alters)  
Monthly social / meeting.  
Contact: Anne Slykhuiss (03) 589 1237

Sat

### 'MOLLY BLOOM'S'

Every night Various Irish bands and singers. 9 - 12 p.m.  
Bay St, Port Melbourne, - phone (03) 646 2681

Every  
Night

### ONE-C-ONE'

(Acoustic/Blues/Folk) Sundays 8 - 11 Brunswick Mechanics Inst., Sydney Rd, (Diag. opp. B'wick Town Hall) Contact Marion Cincotta (03) 347 7515 Melanie Gould (03) 347 5485

Sun

### "PICKIN' AT THE PIGGERY"

3rd Fri each. month (except Jan, Feb & Oct) 8-11p.m. (string band, old time/bluegrass, cajun fiddle music) \$4 (members)/\$5 at the Footscray Community Arts Centre, 45 Moreland St. Performers welcome. Phone (03) 689 5677

Fri

### TRAMWAY HOTEL

St. Georges Road North Fitzroy. Sessions: Sundays 4 - 8  
English session 1st Tuesday of the month 8-15

Sun  
Tue

### THE BOITE: WORLD MUSIC CAFE

Acoustic world music Every Fri. 8.15. 1st. Sat. Irish night. 4th. Sat. Singers night. Mark St Hall, Mark St, N. Fitzroy. phone (03) 417 3550

Fri  
Sat

### CELTIC CLUB

Every 2nd Thurs. approx. 10 - 12, each Fri & Sat, 7 - 12  
Cnr. La Trobe/Queen St. Melbourne - phone (03) 67 6472

Thu  
Fri  
Sat

### DAN O'CONNELL HOTEL

Wed.-Sun. Irish bands. 9.30-12.30 (8.30-11.30 Sun.) Cnr Princes/Canning Sts, Carlton - phone (03) 347 1502

Wed  
to  
Sun

### GREEN LANTERN COFFEE LOUNGE

Tue. - Sun. 8.30-12.30 (2 a.m. Fri-Sat.) (Acoustic/blues/folk/jazz, etc. Open talent night Sunday)  
13 Burwood Highway. Phone (03) 808 8023

Tue  
to  
Sun

### NORMANDY HOTEL

Thurs - Sun. Irish bands 9.30 - 12.30 (9 - 12 Sun.)  
Cnr Queens Pde / Gold St, Clifton Hill - phone (03) 481 3332  
Sessions Fri. Sat. Evenings

Thu  
to  
Sun

### RINGWOOD FOLK CLUB

Every Tuesday 7.45 pm. (Last Tues. of month - Dance night)  
East Ringwood Community Hall, Knaith Rd. E. Ringwood  
Contact: Graeme Higman (03) 758 3438

Tue

## OTHER FOLK MUSIC ORGANISATIONS

### ACROSS THE BORDERS

An organisation established under the auspices of the City of Brunswick. Frequent concerts, workshops, etc., held at various venues. Predominantly multicultural folk music. Contact Peter Leman, Community Arts Officer (03) 380 3301(b.h.) or 'Across the Borders', (03) 387 3376

### THE BOITE

Multicultural folk organisation holding frequent concerts & workshops at various venues, esp. The Boite World Music Cafe, Mark St, North Fitzroy (see above). Contact (03) 417 3550 (answer-phone) or P.O. Box 1150, North Fitzroy 3068

### VICTORIAN FOLK MUSIC CLUB

Dances and dance practices, music and song nights. Publishes song and dance books and tapes of dance music instructions. Contact (03) 497 1628, or write: G.P.O. Box 2025 S. Melbourne, 3001

### TRADITIONAL AND SOCIAL DANCE ASSOCIATION OF VICTORIA

Dances and dance workshops for adults, children and families; days, evenings and weekends throughout the year. Newsletter for members. Contact: Maureen Beggs (03) 347 1518 or Lucy Stockdale (03) 380 4291

## LEARN AND / OR PARTICIPATE MUSIC & / OR SONG

### INTERNATIONAL MUSIC, SONG & DANCE

Occasional workshops organised by The Boite. Contact (03) 4173550.

### IRISH FOLK MUSIC CLASSES

Wed. 7.30pm whistle classes 8 pm music and dancing

Irish set dancing Sat 12.30 - 2.30

Australian Irish Welfare Bureau, Gertrude St, Fitzroy.

Contact Paddy O'Neill (03) 417 3682

### MELBOURNE UNDERGROUND MUSICIANS SOCIETY

Contact Phil and Elaine 798 8040

### CELTIC FOLK MUSIC CLASSES

Sat 3 - 5 pm

Australian Irish Welfare Bureau, Gertrude St, Fitzroy.

Contact Seagull or Jeanette (03) 481 6051

### RINGWOOD FOLK CLUB

Tuesdays. (Except last Tuesday each month; Bush Dance night) 7.45

Dance music, singing, etc. E. Ringwood Community Hall,

Knaith Rd (off Dublin Rd) Contact Graeme Higman (03) 758 3438

### VICTORIAN HARP SOCIETY

2nd Saturday each 2nd month 2.00 p.m.

(esp. for harp lovers, beginners & players) Contact: (03) 481 6051

## LEARN AND PARTICIPATE DANCE

### ST. KILDA INTERNATIONAL DANCE SCHOOL

Thursdays 7.30 - 10 pm. (School terms) \$5 European, Israeli, Circle and line dancing. St Margarets Hall, Hotham St. (cnr. Denman Av)

E. St Kilda. Contact Marie 531 1284

### COLONIAL DANCERS

Every Wednesday (live music every 1st Wed.) 8.00 - 10.30 pm.

Australian, Colonial, British Isles, Old Time, etc.

St Michael's Hall, MacPherson St. North Carlton.

Contact Garry Clarke (03) 687 5504 (a.h.)

or Heather Larsen (03) 860 2293 (b.h.)

### COLONIAL BUSH DANCE (RUN BY VFMC)

Live Music. Last Tuesday of month 7.45 pm

East Ringwood Community Hall (Melways 50 B8)

Contact Graeme Higman (03) 758 3438

Also 1st Saturday of each month. Ringwood Uniting Church Hall

Station St. Ringwood. Contact: Ced Garrick (03) 729 4375

### INTERNATIONAL FOLK DANCING WORKSHOPS

Tuesdays 7.00 pm Beginners. 8 pm. Intermediate

St. Michael's Hall MacPherson St. North Carlton. \$3.

Contact Graham Witt (03) 383 2869.

**IRISH DANCING CLASSES**

1. Celtic Club, Cnr LaTrobe/Queen Sts, Melbourne, Thurs. 8-10 Phone (03) 67 6472
2. (Geelong area) Holy Spirit Parish Hall, Bostock Av, Manifold Hts, Tues & Thurs 4.30-6pm. Contact Margaret Dempsey (03) 233 7835 or Siobhan Hoare (052) 784 249

**ISRAELI & INTERNATIONAL FOLK DANCING**

(Enrolment required)  
Classes at various venues. "Sheffi's School of Multicultural Dance"  
1 Stanley St, Collingwood, 3066.  
Contact Sheffi Shapira (03) 817 1632.

**MORRIS DANCING: BALLARAT MORRIS DANCERS**

Thursdays 7 - 9 pm. Uniting Church Hall, Wendouree Pde/Forest St.  
Contact Pamela Hince (053) 391 554

**MORRIS DANCING: BRITANNIA MORRIS MEN**

Thursdays 8 - 11 pm Jilka Jilka Cmty Centre, Plant St, Northcote.  
Contact Peter Cartledge (03) 481 2337

**MORRIS DANCING: OLD THUMPER N.W. CLOG MORRIS**

2nd and 4th Tuesdays. 8 - 9.30 pm \$3.  
St Mark's Community Centre, George St, Fitzroy.  
Contact Colin Towns/Jenny Lowe 613 9409 (w) 510 5798 (h)

**MORRIS DANCING: SHE-OAKS**

Ladies Morris Dancers Wednesdays 7.30 pm  
Melbourne Uni Sports Centre Activities Room  
Contact Kathy Gausden (03) 489 2554 (ah)/(03) 608 1191

**MORRIS DANCING: COCKATOO**

Members wanted 7.30 Mondays Cockatoo Neighbourhood Centre, rear Community Hall, Pakenham Rd. Cockatoo  
Contact (059) 688 829 P.O. 150, Cockatoo 3781

**MORRIS DANCING: PLENTY MORRIS DANCERS**

1st, 3rd and 5th Tuesdays 7.30 pm Church Hall Cnr. Church and Denham St. Hawthorn. Contact Kerrie Casey (03) 570 6811

**SQUARE DANCING CLASSES**

Wednesdays Beginners/ Every 2nd Friday. Advanced  
St Matthews Church Hall, Nepean Hwy, Cheltenham.  
Contact Steve (03) 383 2414

**WELSH DANCING CLASSES**

2nd & 4th Thursdays 7.30 - 9.00 pm  
Cambrian (Welsh) Church Hall, LaTrobe St, Melbourne.  
Contact Liz Hardidge (03) 386 6686  
or Michael Williams (03) 489 5415

**ENGLISH COUNTRY DANCING**

1st, 3rd and 5th Tuesdays. 8 pm \$4 or \$3 cons.  
St Mark's Community Centre, George St, Fitzroy.  
Contact Colin Towns/Jenny Lowe 613 9409 (w) 510 5798 (h)

**REGULAR DANCES - INNER METROPOLITAN****COBBERS 'GUMTREE' BUSH DANCES**

Monthly  
LaTrobe University Union Hall. \$14. Contact (03) 497 3227

**COLONIAL DANCE WITH THE UP TO SCRATCH BAND**

1st Wed each month 8 - 10.30 pm St Michael's Hall, MacPherson St.  
North Carlton. Musicians and dancers welcome.  
Contact Maureen Beggs, (03)347 1518 (a.h.)

**PARADIDDLE BUSH DANCES**

Saturday nights, every 6 weeks or so. 8 - 12 pm  
St. Melb. Town Hall, BYOG & supper. \$10/\$9/\$5  
Contact (03) 844 2476

**RINGWOOD VFMC BUSH DANCE**

First Saturday each month 8 pm. Ringwood Uniting Church Hall  
Station St Ringwood Contact Ced Garrick (03) 729 4375

**REGULAR DANCES - OUT OF TOWN****BENDIGO DISTRICT**

"Bush Dance and Music Club of Bendigo and District"  
Colonial and Old Time dancing. Including the Bendigo Dance,  
Spring Gully Hall, with the Emu Creek Band. Fridays.  
Contact Mary Smith (054) 421153, or 91 Retreat Rd, Bendigo, 3550.

**BERWICK DISTRICT**

'Old Time Dances' around \$3.00 8 - 12 pm.  
1st Sat. each month Mechanics Hall, Clyde  
2nd Fri. each month Public Hall, Heads Road, Yannathan  
3rd Sat. each month Masonic Hall, Princes Highway, Berwick  
4th Sat. each month Memorial Hall, Worsley Rd, Bangholme  
Contact Alf Johnston (03) 707 2327 (a.h.)

**FRANKSTON BUSH DANCES**

Occasional Saturdays From 7.30 pm BYOG & Supper.  
Venues and bands vary. Contact Evan Webb (03) 783 8820

**GEELONG**

Colonial Balls and regular 'Bullockies Balls'  
8 - 12 pm. BYO everything. Venues and bands vary  
Contact Andrew Morris (052) 213 095 (a.h.)  
or John Nash (052) 485193

**TALLANGATTA**

'Old Time Dance'  
3rd Saturday each month 8.15 - 11.30 p.m.  
Church of England Hall, Tallangatta. Contact (060) 712 545

**YANDOIT**

Old Time Dance  
Last Friday each month 8 p.m.  
Yandoit Hall, \$3 Real country supper (bring a plate if possible)  
Contact Brian Priest (054) 764 205  
or Lorraine Ogilvie (03) 428 1810

**MUSIC VENUES - OUT OF TOWN****ALEXANDRA 'U.T. CREEK FOLK CLUB'**

4th Friday of month Shamrock Hotel  
Contact Jim Caterwell (057) 722 157 a.h (057) 721 633 bh

**BALLAARAT FOLK CLUB**

Undergoing reorganisation. Contact Leanne (053) 456 202

**CASTLEMAINE**

Informal sessions at The Bridge Hotel  
Contact Geoff Perrie (054) 72 1125

**ECHUCA 'RIVER FOLK ECHUCA'**

Once a month, night varies. Special guest nights  
Pastoral Hotel, Sturt St. Contact Lisa Vinnicombe (054) 825 740 (ah)

**FRANKSTON 'PENINSULA FOLK CLUB'**

First and third Sundays 7 - 11.  
Frankston East Hall. Cnr. Beach St. and Cranbourne Rd Frankston  
Contact Evan Webb (03) 783 8820

**GEELONG FOLK CLUB**

Every Friday 8.30 pm at The Newtown Club, 12 Skene St., Newtown  
Contact: Gailene Clifton (052) 442 242 ah  
Jam sessions 2nd Wed. each month, 7.30 to 10.30 pm,  
Argyle Hotel, 30 Aberdeen St. Geelong West  
Contact Adrian Kelly (052) 218 394 bh (052) 432 282 ah

**GUILDFORD FOLK CLUB**

Guildford Hotel. 3rd Wed of the month. Acoustic concert and floor singers  
and instrumentalists. Led by Phil Day \$4 (\$3 conc.)  
Contact Kelly (054) 762 277

**HEALESVILLE FOLK CLUB**

No details Available

**MALDON**

Occasional informal sessions, Contact Neville Wilson (054)752 230

**MT. GAMBIER FOLK CLUB**

2nd and 4th Fridays each month  
Upstairs Lounge, Macs Hotel, Penda Rd., Mt. Gambier.  
Contact Dorothy (087)253 767

**SELBY FOLK CLUB**

1st Friday each month Community House, Wombalana Rd, Selby. Contact  
754 2039

**TYERS 'GIPPSLAND ACCOUSTIC MUSIC CLUB'**

1st Sunday each month 8 pm. Tyers Hall, Main Rd, Tyers (near Traralgon)  
Contact Lyndal (051) 74 5680

**WARRNAMBOOL '4 PORTS FOLK NIGHT'**

First Friday each month.  
Shamrock Hotel, Dennington.  
Contact Dennis O'Keeffe (055) 62 9565

**'CENTRAL VICTORIAN FOLK ASSOCIATION'**

A regional organisation in the Central Victorian area which holds  
occasional special concerts and other functions.  
Contact Kelly (054) 762 277

For further information regarding folk events/news/etc., in Victoria and interstate, please see the full edition of FOLK VINE.

For further information regarding specific events please check the local papers, such as the 'Entertainment Guide' in Friday's Age.

The information contained in these pages appears courtesy of the FOLK SONG AND DANCE SOCIETY OF VICTORIA, as part of the monthly FOLK VINE publication.

Please assist in keeping it up to date by letting us know of any changes.

Contact The Editor at the address below:

SUPPORT FOLK MUSIC. SONG AND DANCE - JOIN THE F.S.D.S.V.

Write to P.O. Box 1096, Carlton, 3053