

Black Velvet Band

♩. = 53

D



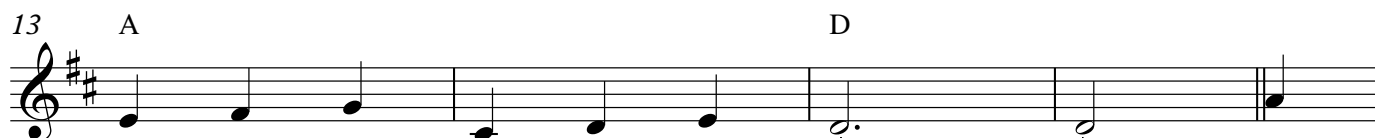
1. 'Twas in the ci - ty of Lon - don _____ in a -
 2. One day as we were a - wal - king, _____ A _____
 3. Be - fore/the Lord Mayor I was ta - en, _____ "Your case,



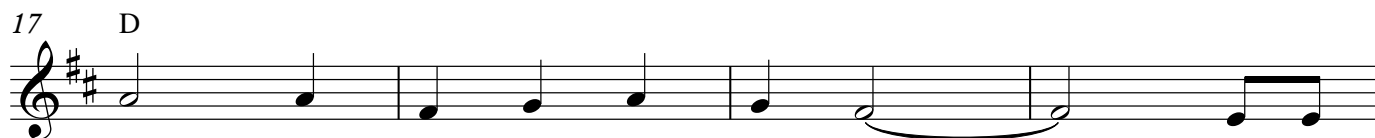
pren - tice - ship I _____ was bound _____ And _____
 gen - tle man passed _____ us by; _____ I could _____
 sir, I can plain - ly see. _____ And _____



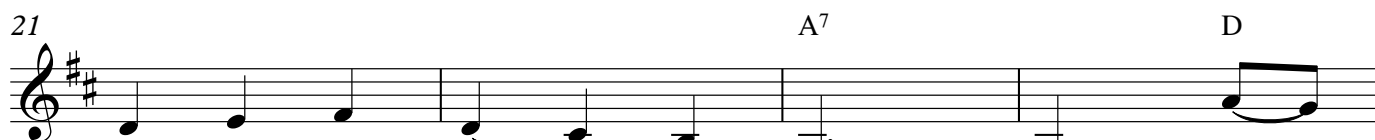
man - ny's the gay _____ old hour _____ I've _____
 see she was up to some mis - chief, By/the _____
 if I'm not great - ly mis - ta - ken, You're _____



spent in that dear old _____ town. _____ One _____
 rol - ling of her dark blue eye. _____ A/gold _____
 bound far _____ o - ver the sea." _____ Then/it's _____



day as I was a - wal - king _____ a _____
 watch she picked from his poc - ket _____ and _____
 o - ver the dark and blue o/cean, _____ Far a -



long my _____ us - ua - al beat _____ A _____
 sly - ly placed in - to my hand _____ I was _____
 way to Van Die - man's _____ land, _____ Far a -

25

pret - ty lit - tle young mai - den, Came
tak - en in charge by a cop - per. Bad
way from my friends and re - la - tions And/the

29

trip - ping a - long the street.
luck to the black ve - vet band.
girl with the black vel - vet band.

33

Oh, her eyes they shone like dia - monds I

38

thought her the pride of the land The

42

hair that hung down on - her shoul - der was

46

tied up with a black vel - vet band.